

# Walkway to the Deserted Village of Steimreway

**Difficulty:** This is a strenuous walk over rough and boggy moorland without tracks.

**Length:** 3.5 miles (5.5km) return

**Time:** 2-3 hours

**Directions:** Follow way marker posts and head west. Return by same route.

The deserted village of Steimreway stands today like a green oasis between the moor and the sea. Its ruined buildings, and the associated remains of field walls, cultivation beds, and a well are reminders of its former inhabitants and the often hard lives they led. The original village of some 80 people was cleared in 1857. Following land raids, the village was re-settled in the early 1920s by 5 families, the last of which had left by the early 1940s. The remains of both periods of occupation can be seen today.

Tha Stiomrabhaigh an-diugh na bhaile fàs, làrach uaine eadar mòinteach is muir le tobhtaichean, ballaichean cloiche, feannagan agus tobair mar fhianais air na daoine a rinn am beatha ann, beatha chruaidh aig amannan. Bha mu 80 a' fuireach anns a' bhaile nuair a chaidh fhuadach ann an 1857. An dèidh aimhreit fearainn tràth anns na 1920an, rinn còig teaghlaichean an dachaigh anns a' bhaile a-rithist. Dh' fhàg an teaghlach mu dheireadh tràth anns na 1940an.

## Wildlife

You can see a variety of wildlife and plants on the walk, depending on the season and weather conditions.

This may include:

### Mammals

Otter, Porpoise, Grey Seal

### Birds

Sea Eagle, Golden Eagle, Buzzard, Raven, Hooded Crow, Cuckoo, Wheatear, Stonechat, Oystercatcher, Cormorant, Red-breasted Merganser, Heron, Gulls

### Butterflies and other Insects

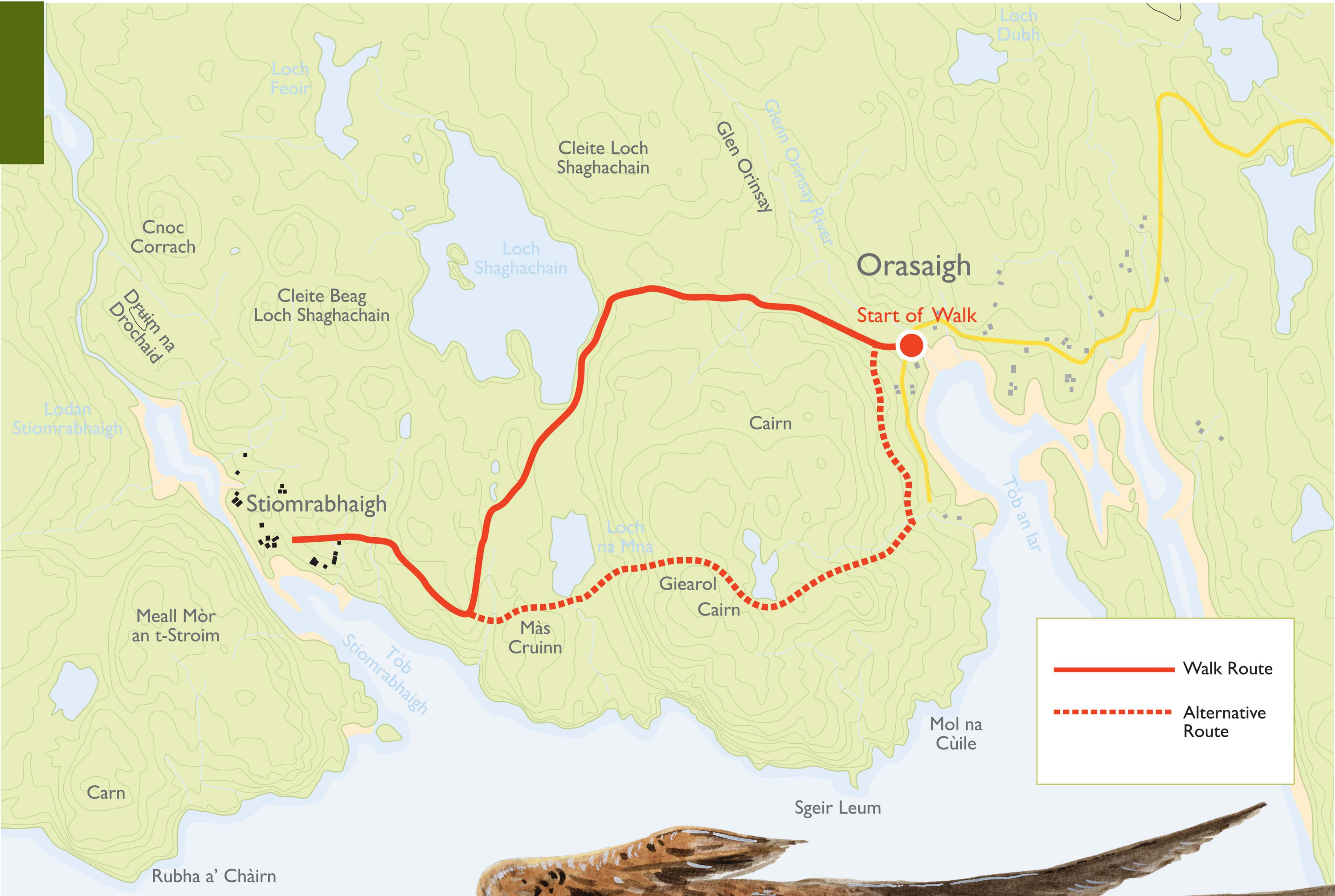
Small Tortoiseshell, Green-veined White, Common Blue, Meadow Brown, Large Heath, Dragonflies

### Plants

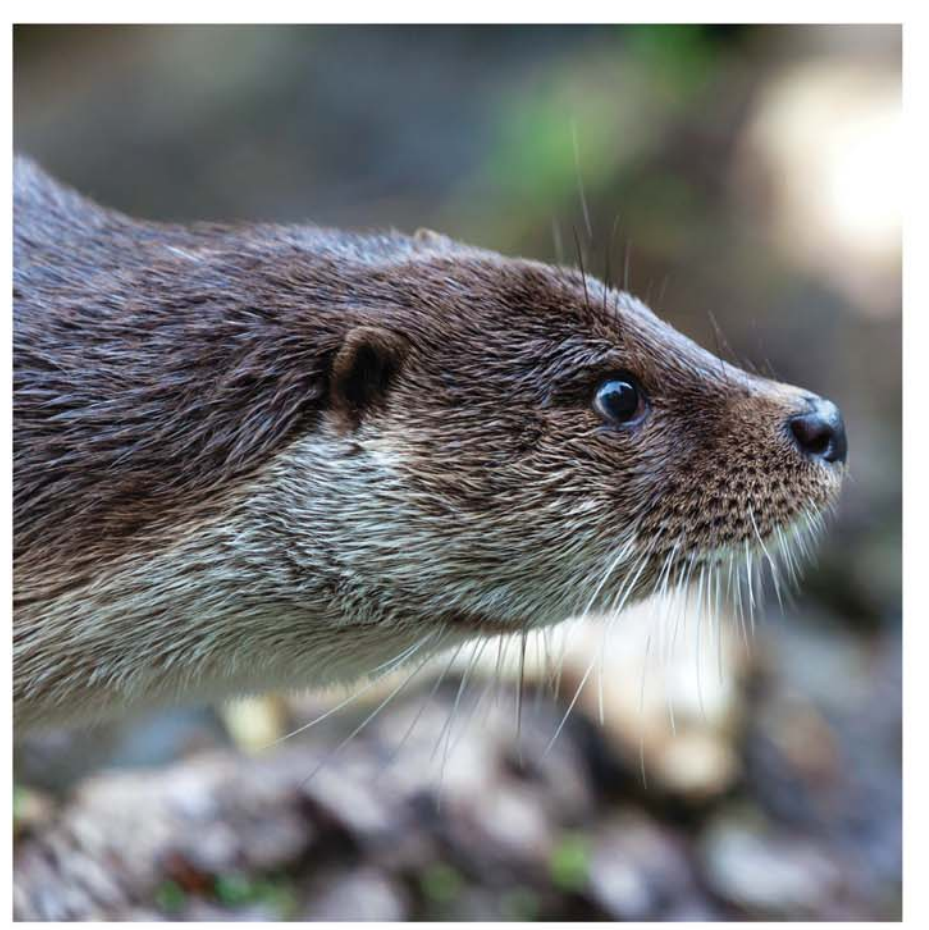
Sundew, Butterwort, Bog Asphodel, Tormentil, Milkwort, Lousewort, Ling, Bell Heather, Cross-leaved Heath, Cotton Grass, Aspen trees (on cliff in the village)

More information on the history of Steimreway and walks in the area can be found at Ravenspoint, Kershader.

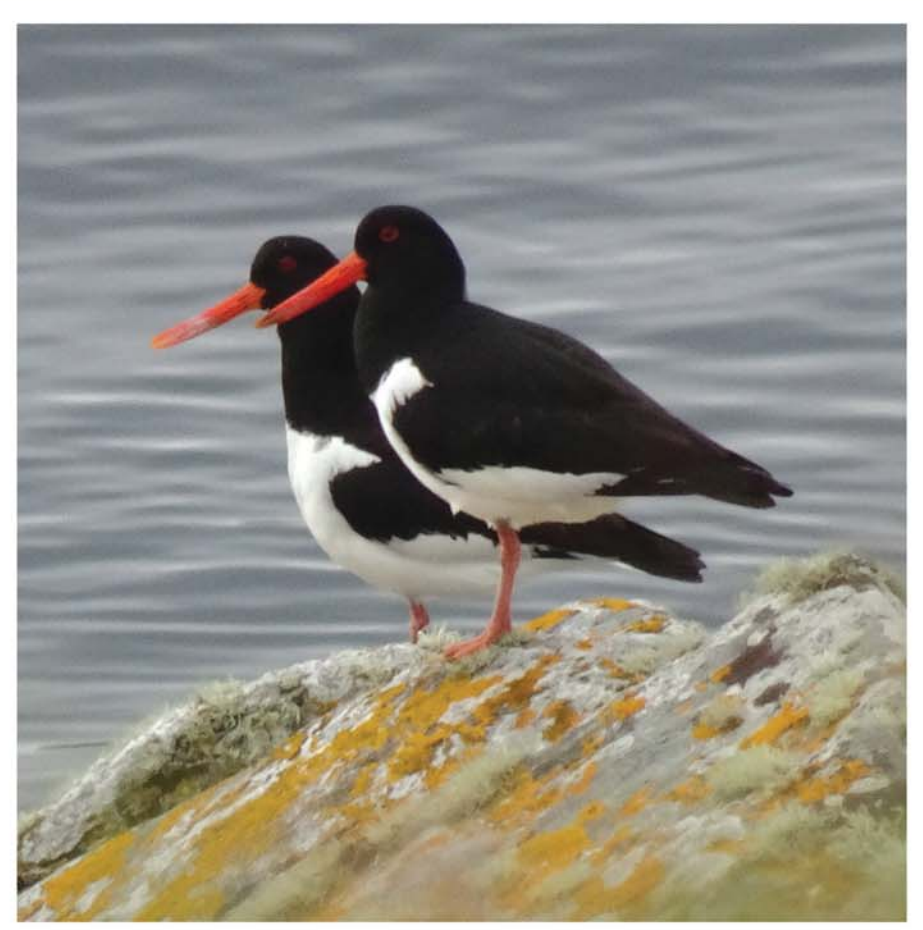
We would be grateful for any donations, which will be used to maintain the walkway.



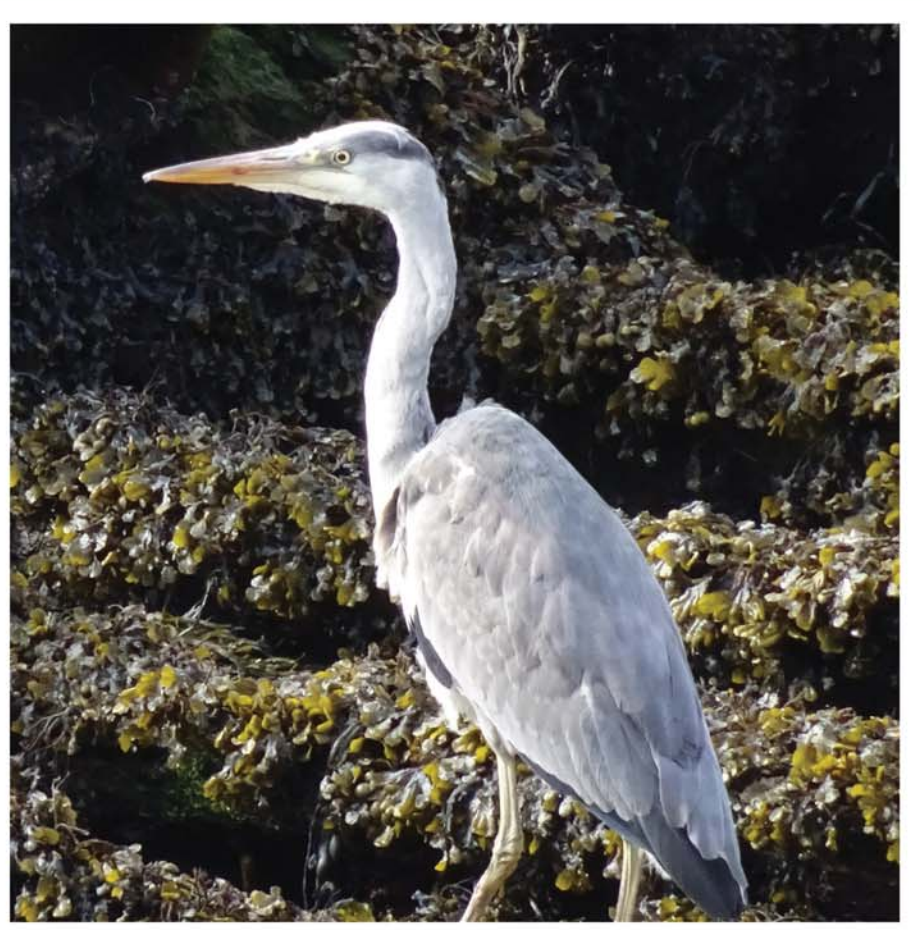
Golden Eagle



Otter



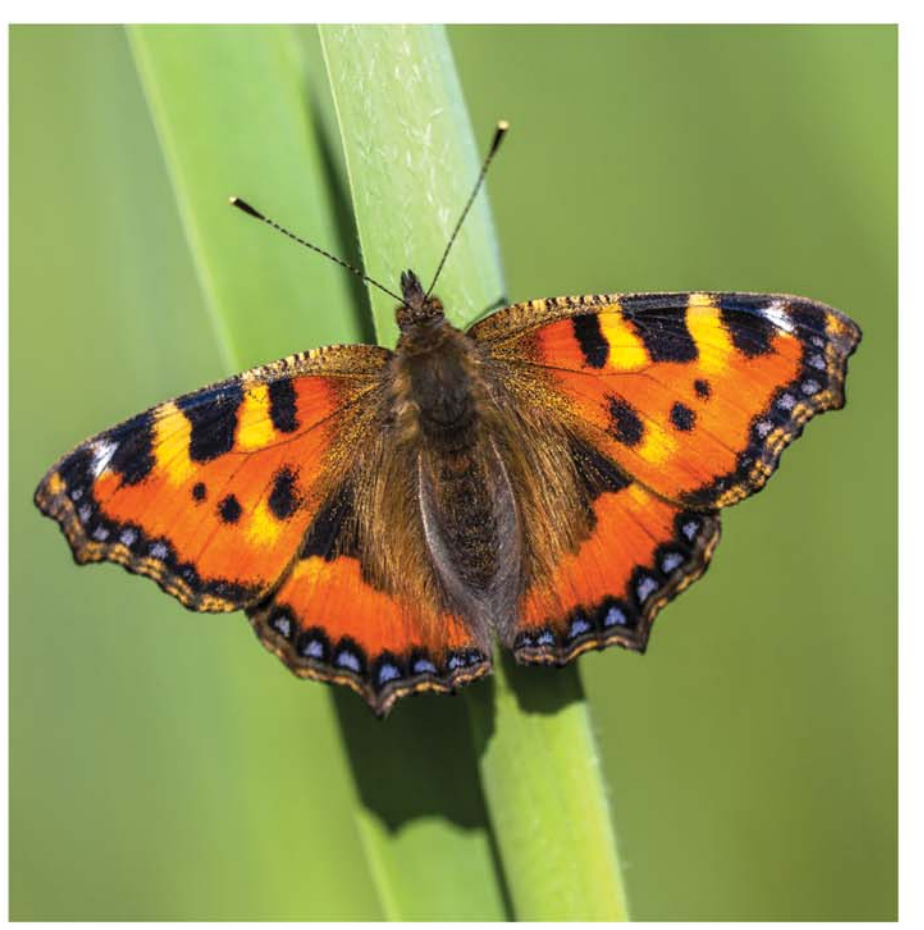
Oystercatchers



Heron



Small Tortoiseshell



Bell Heather

